

Tech Tip Tuesday—March 22, 2016

by David Hirsch

Livery Coach .net introduction

As we roll out Livery Coach.net to all our customers, we are going to start transitioning the screen shots and other examples in our Tech Tips to shots from the new system. In addition, we are going to start showing you some of the differences and new features of LiveryCoach.net in future Tech Tips.

As mentioned in last week's Tech Trip, we are no longer putting any development resources in the "old" version of LiveryCoach (which we call "VB6"). The plan is to roll out LiveryCoach.net to all customers this year, and discontinue support for VB6 completely by the end of 2016. The only technical requirement is that your database be running SQL 2008 or newer. (Note that if you are still running SQL 2005 you will need to upgrade. SQL Server 2005 is obsolete. Microsoft ended mainstream support for it in 2011, and is ending extended support for it next month. For more information, see <https://www.microsoft.com/en-us/server-cloud/products/sql-server-2005/>) LiveryCoach.net is compatible with SQL2008, SQL2008R2, SQL2012, and SQL2014.

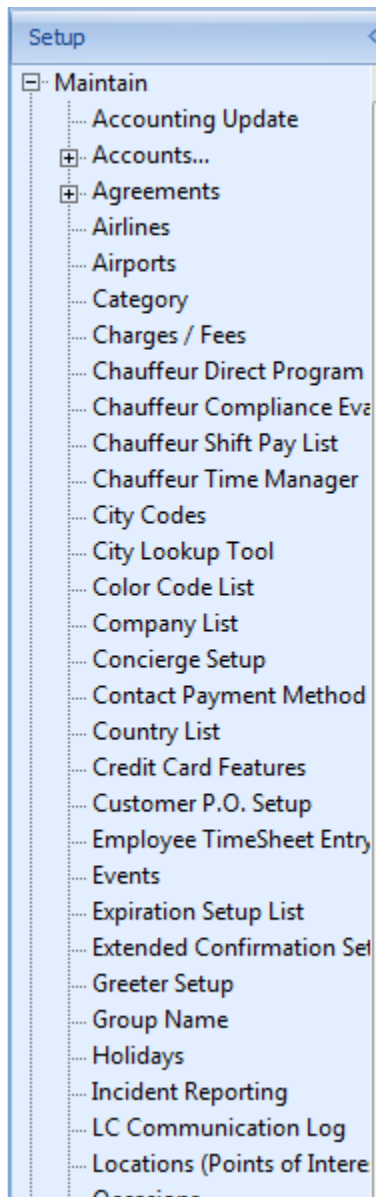
One of the important things to know about Livery Coach.net is that everything is in one program. There are no longer separate programs for Reservations and Dispatch, Maintenance, and TripBook. LiveryCoach.net is also launched with a new icon.



When you launch LiveryCoach.net, it should look somewhat familiar—an updated look to an old friend. The three major functional divisions of the "old" Livery Coach can be found on the left menu bar—Reservation is similar to the old Reservations and Dispatch; TripBook is TripBook; and Setup is similar to the old Maintenance.



When you click on Setup, the menu dropdown on the left should look familiar from the old Livery Coach Maintenance. Click on the + to expand the selections.

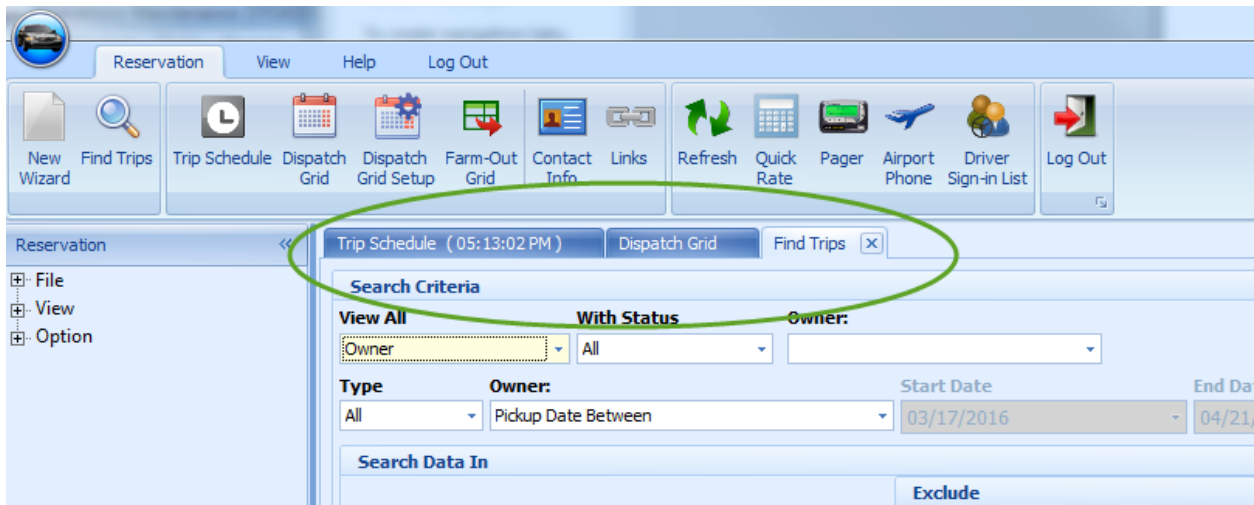


When you click on the Reservation tab on the left, it will bring up the Reservation screen with the menus down the side. In order to actually make a reservation, find a trip (formerly known as “open trip”), or

open the Trip Schedule, Dispatch Grid, etc, you will need to click on the top Reservations menu item, which will open up a ribbon of icons at the top giving you quick access to all these functions.



Note that you can have multiple windows open at once, and they appear as tabs across the top of the screen. So you can easily open, say, the Trip Schedule AND the Dispatch Grid, AND have the Find Trips screen at hand for searching.



In future Tech tips we will be highlighting other features of the new LiveryCoach.net.